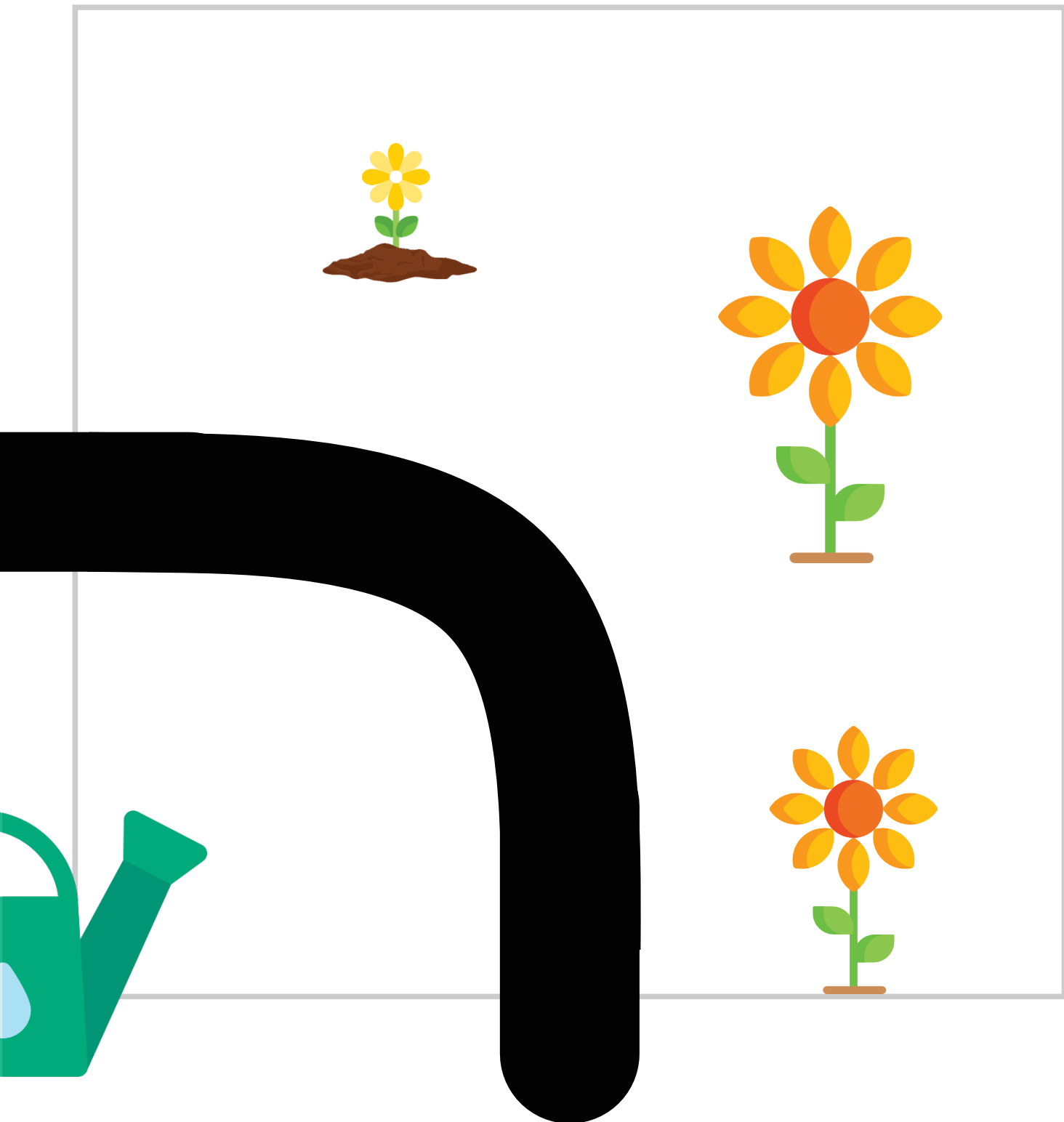
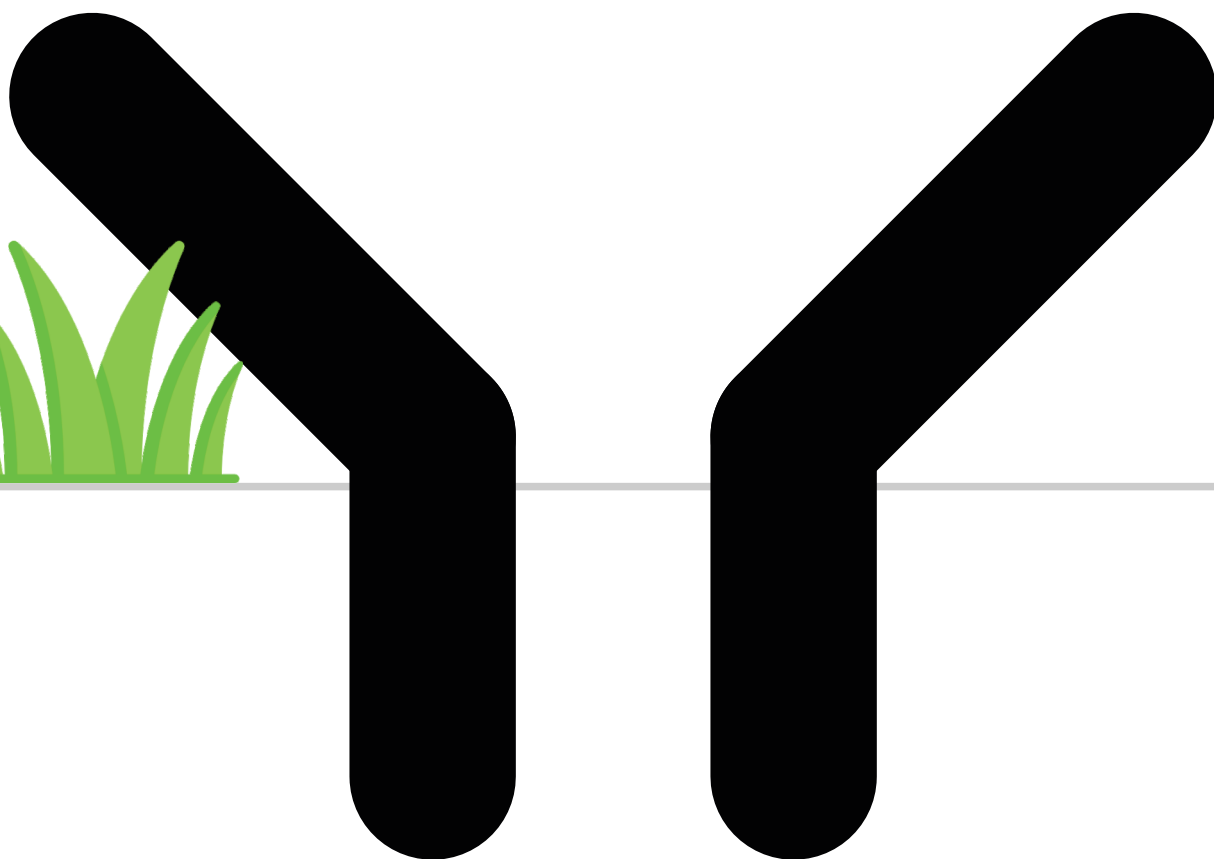


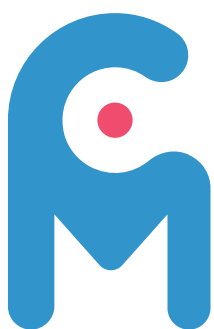
START M



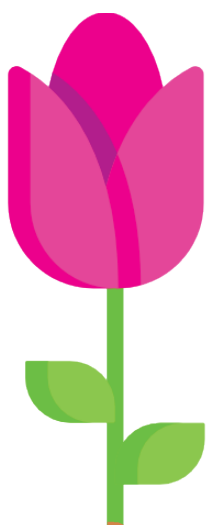
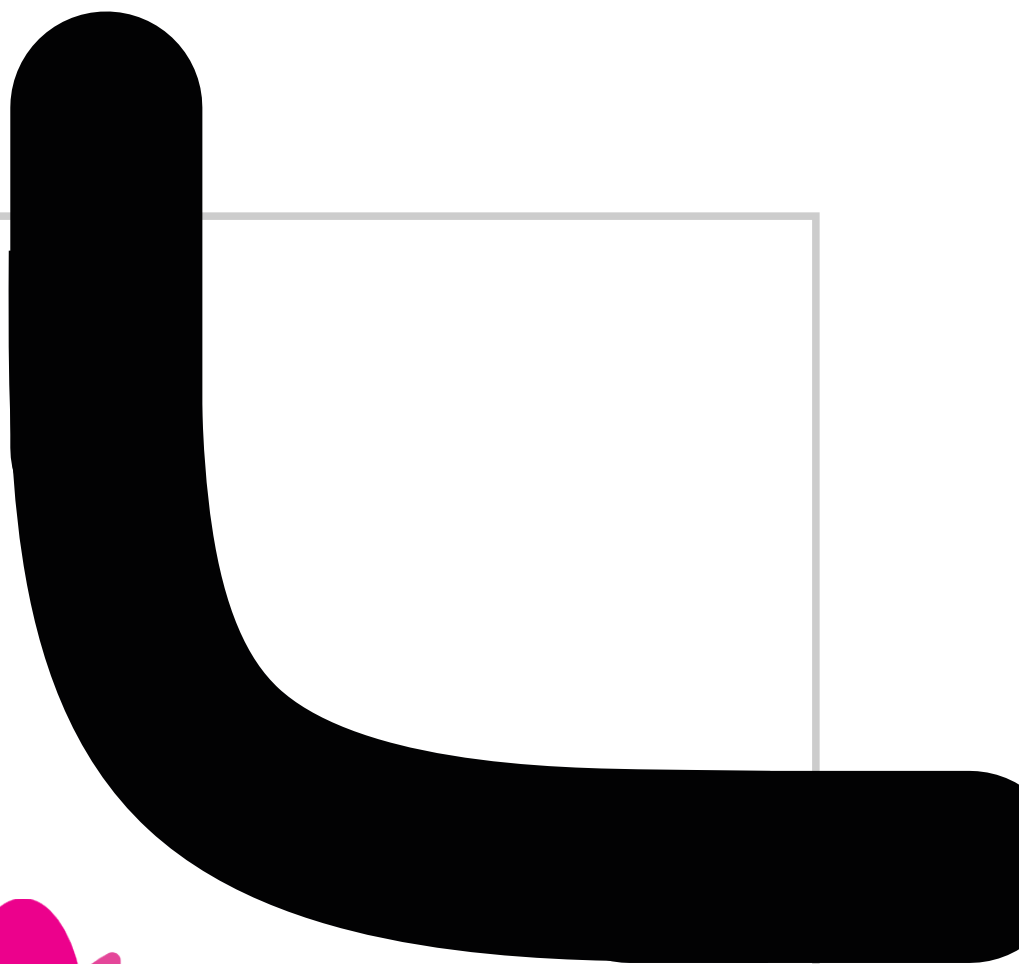


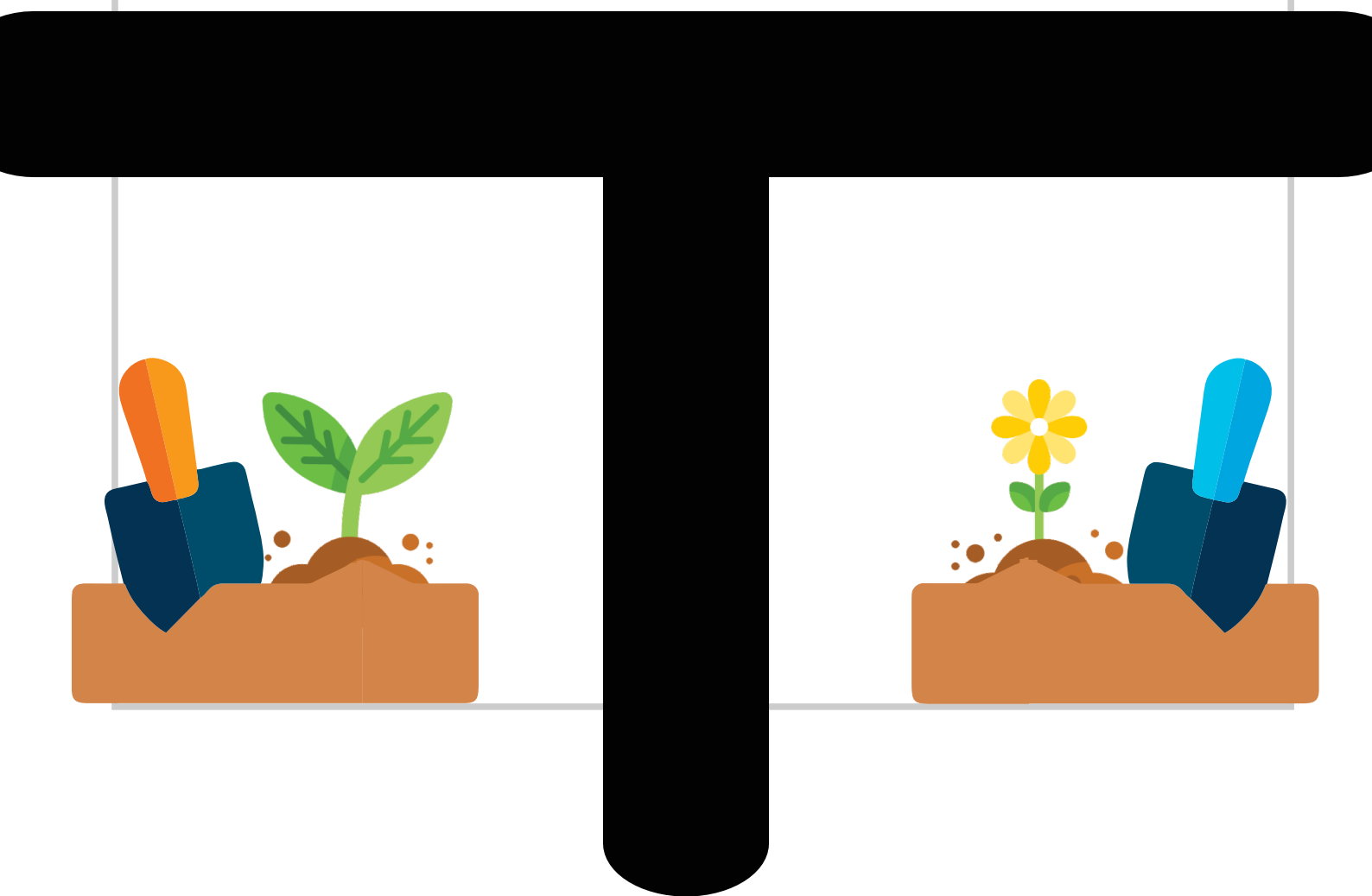
CILJ

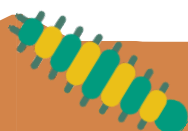
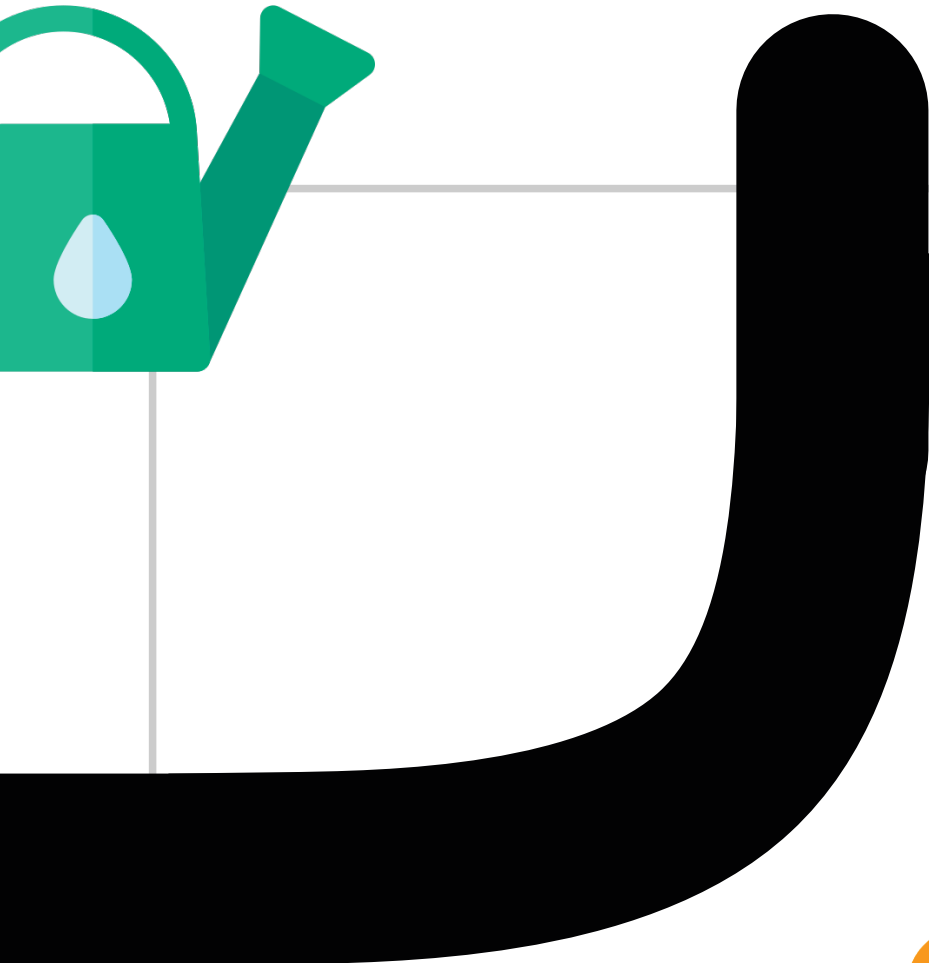


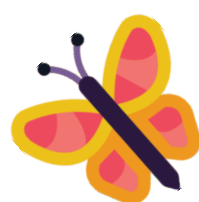


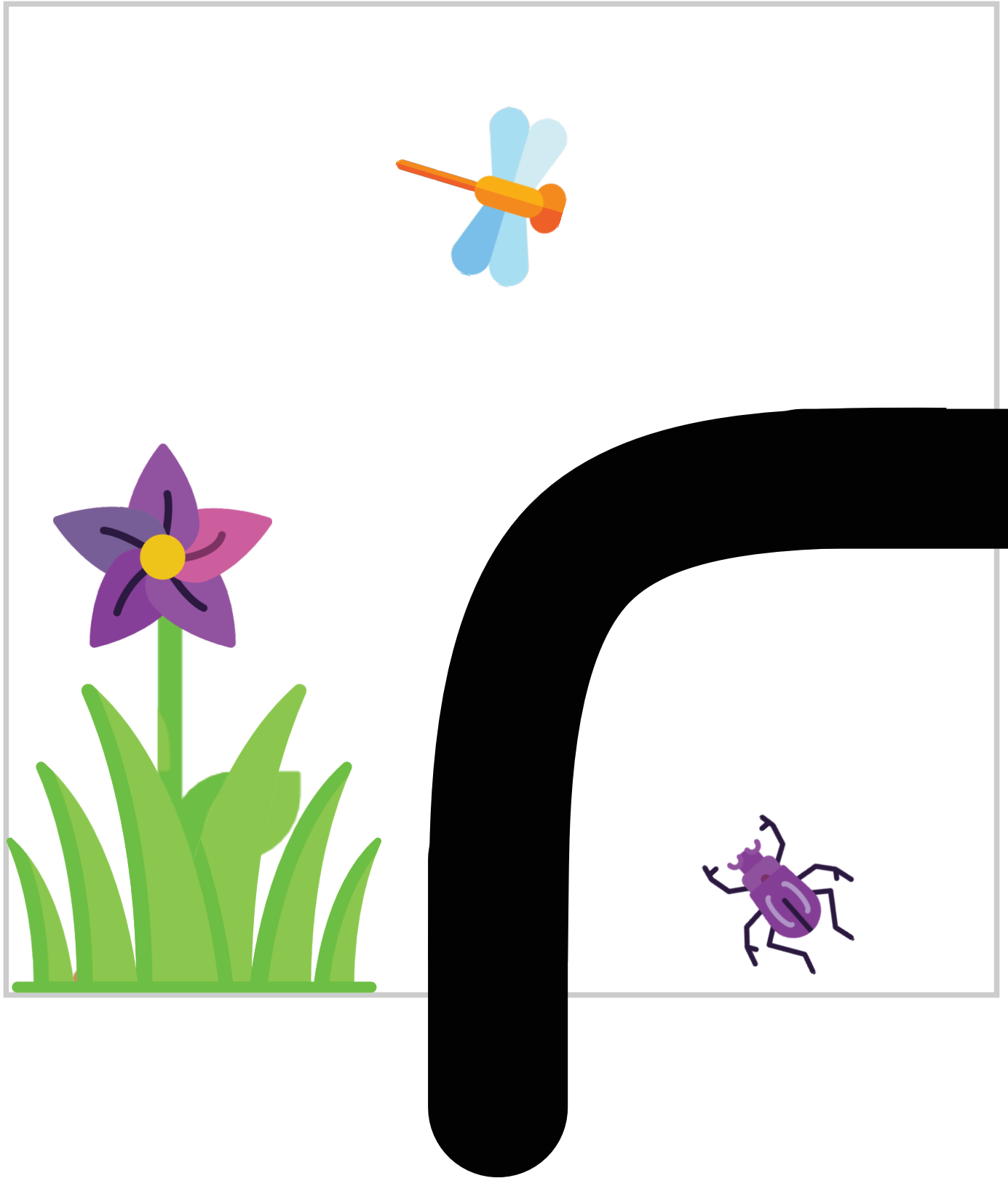
**CROATIAN
MAKERS**

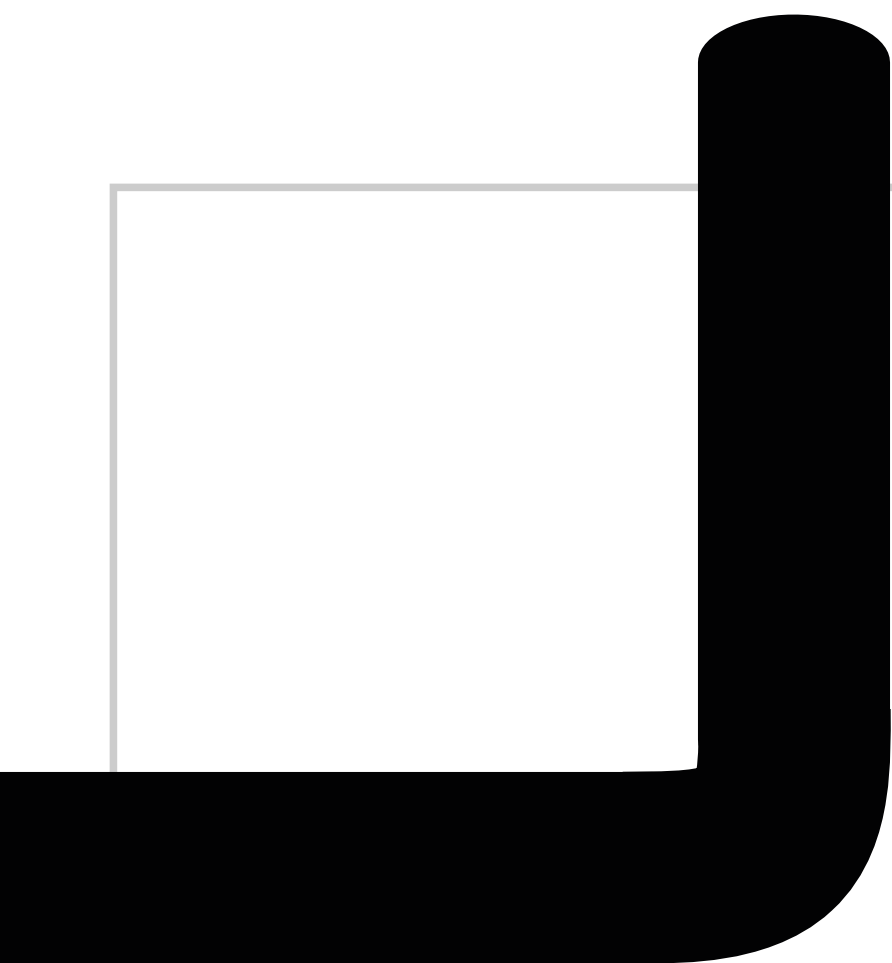




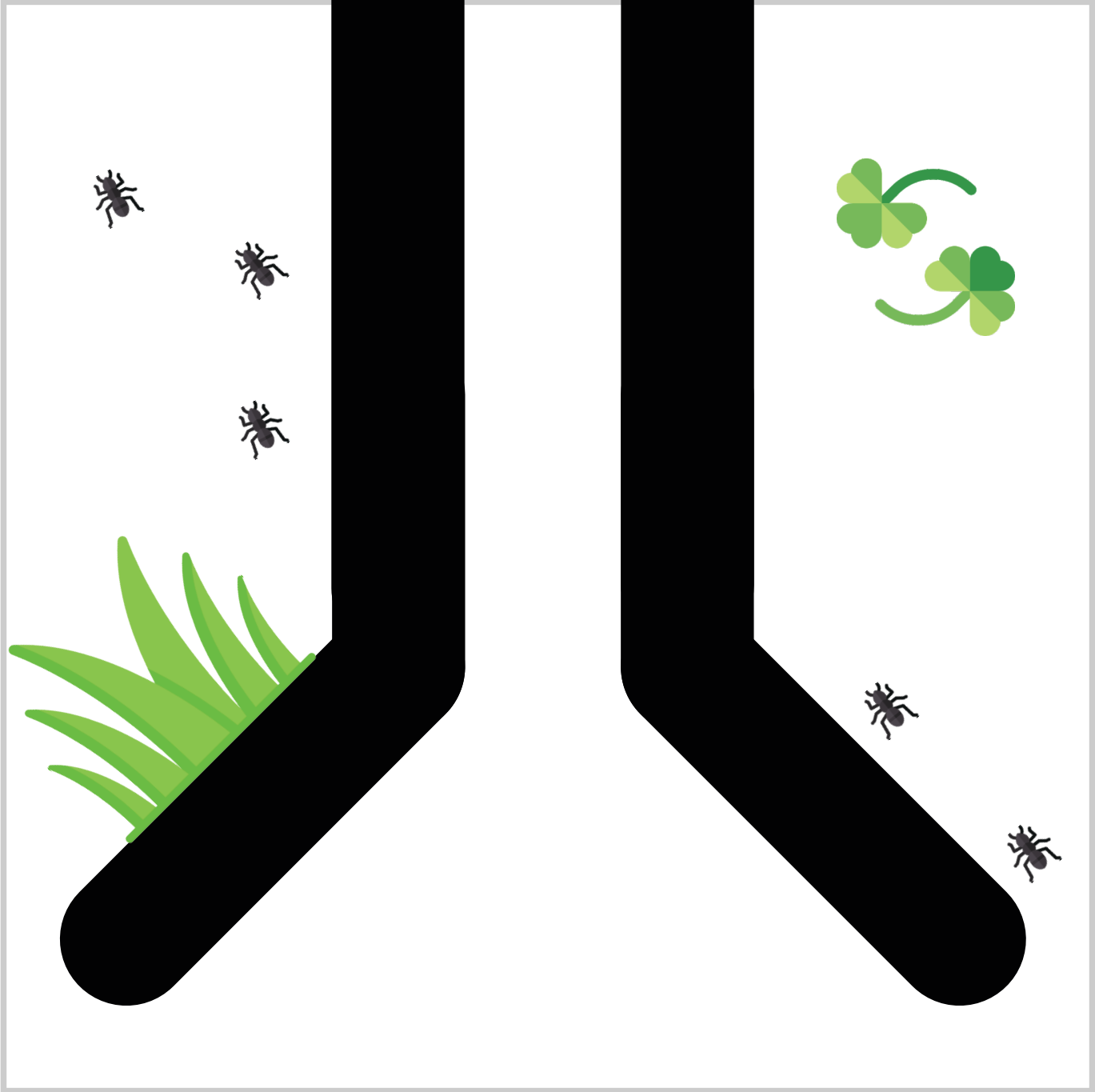


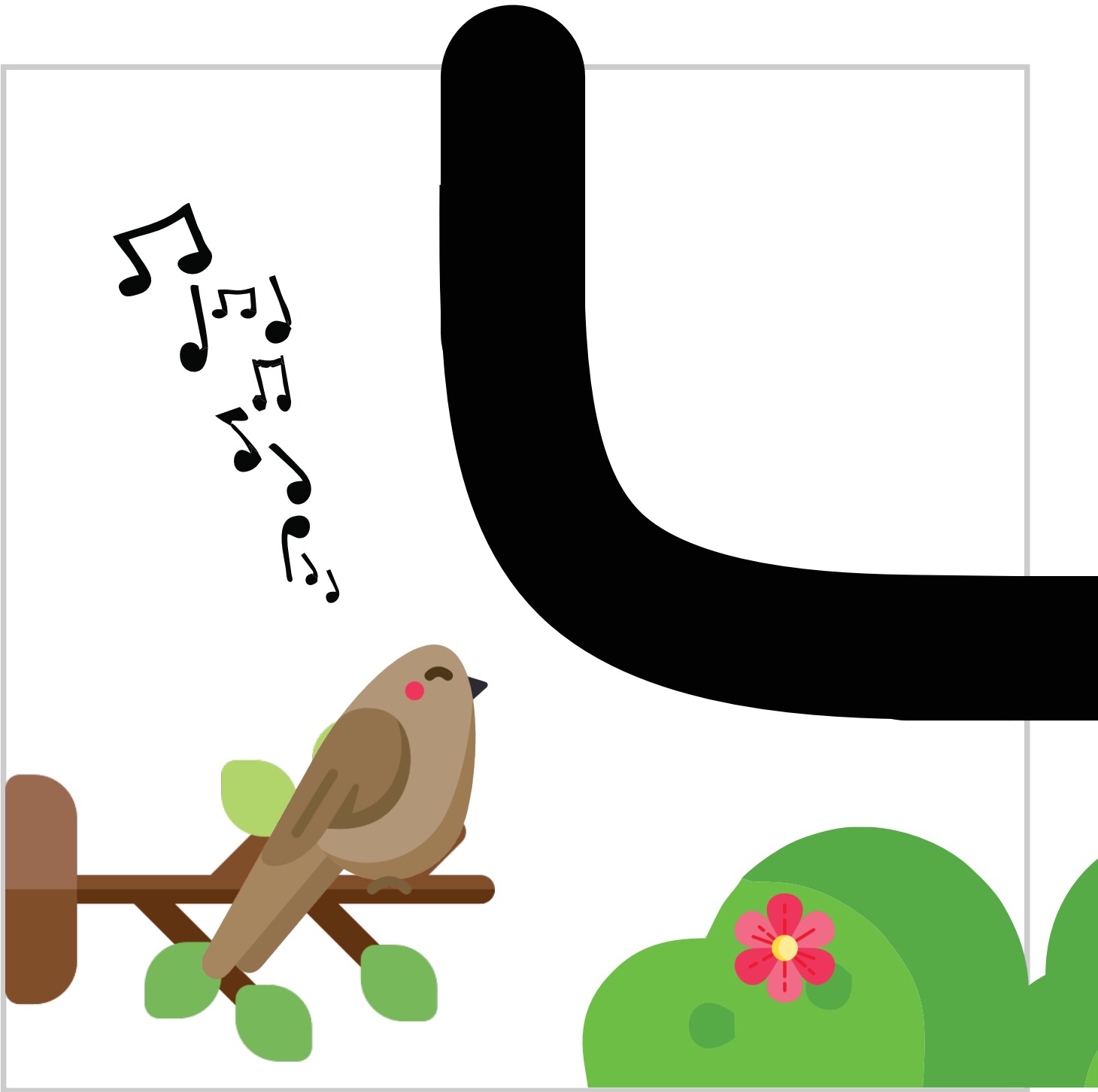


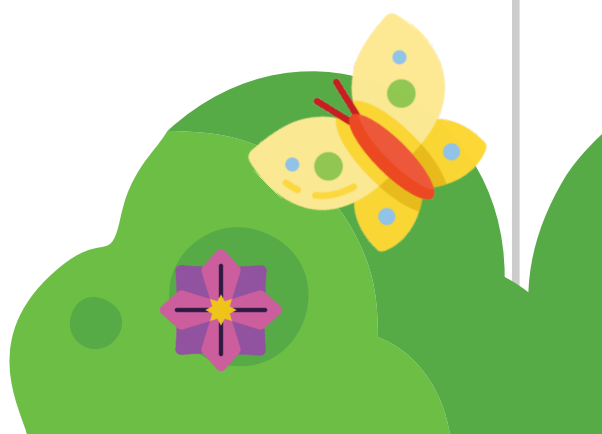
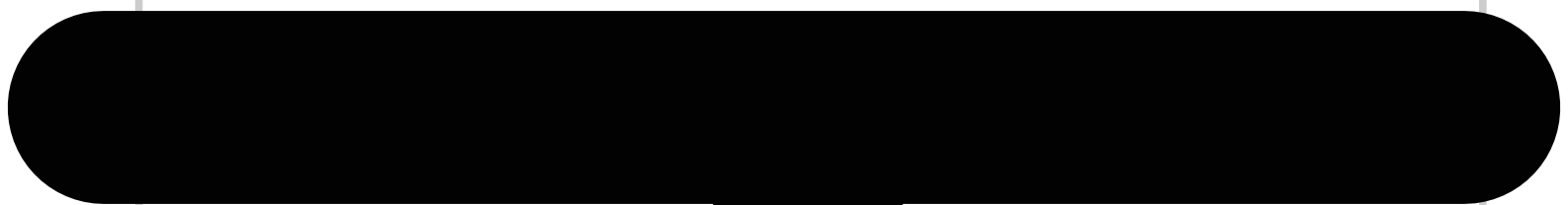


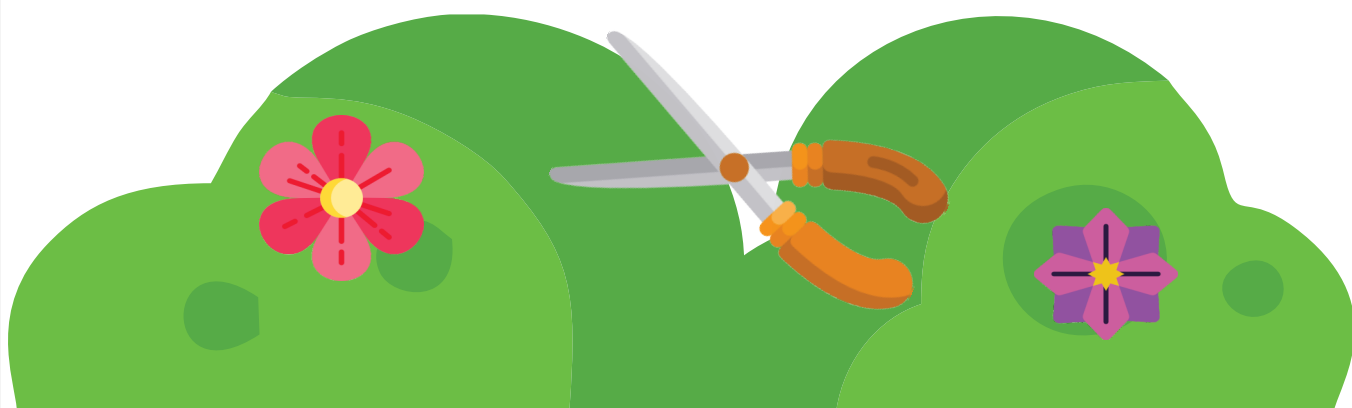
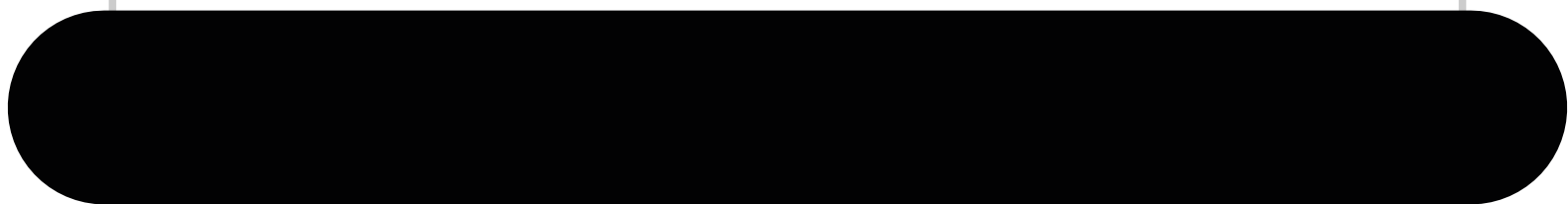


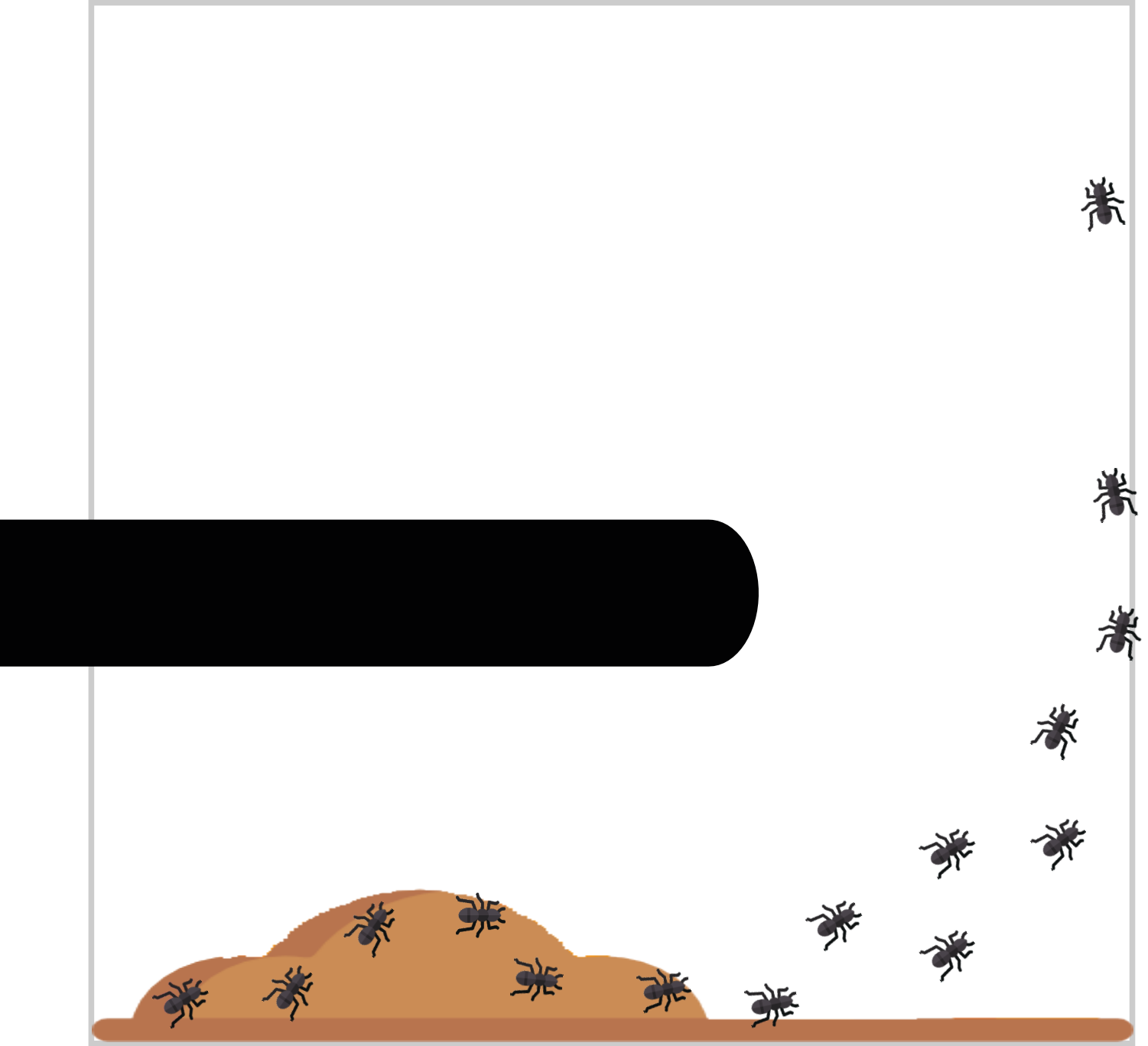




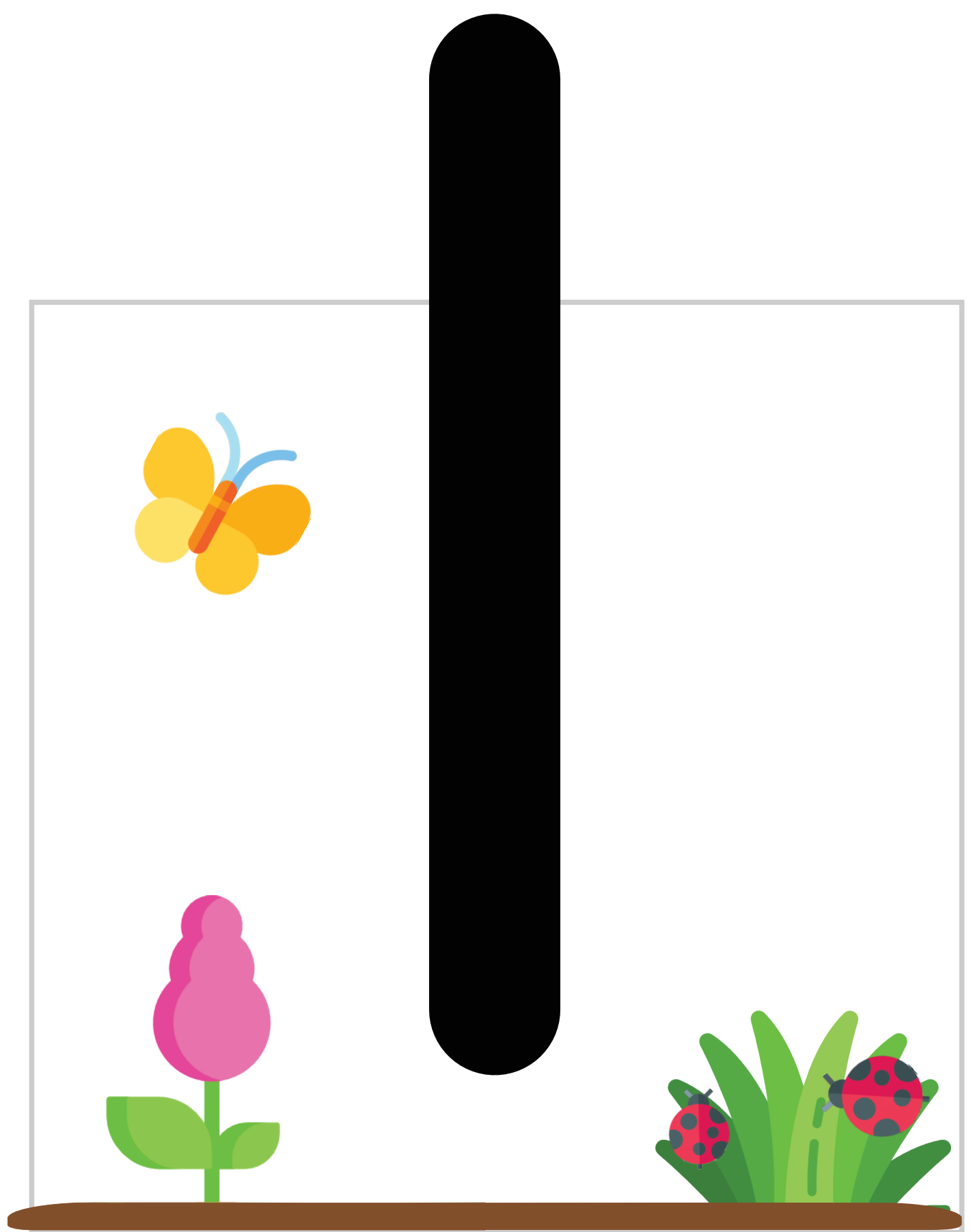


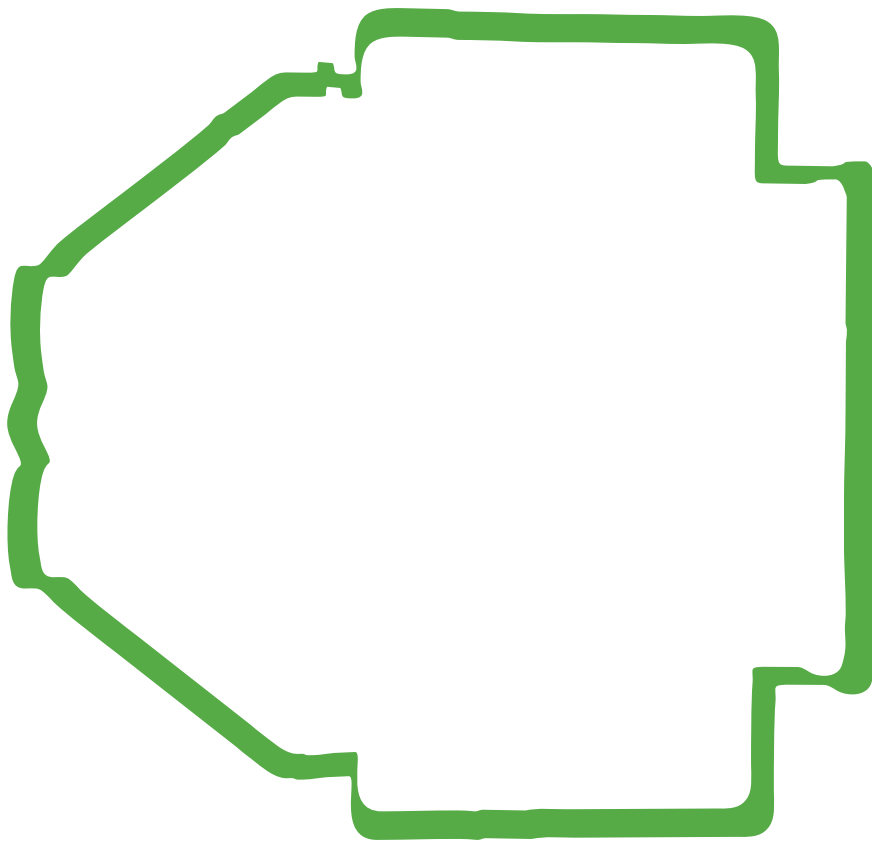
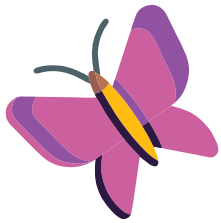






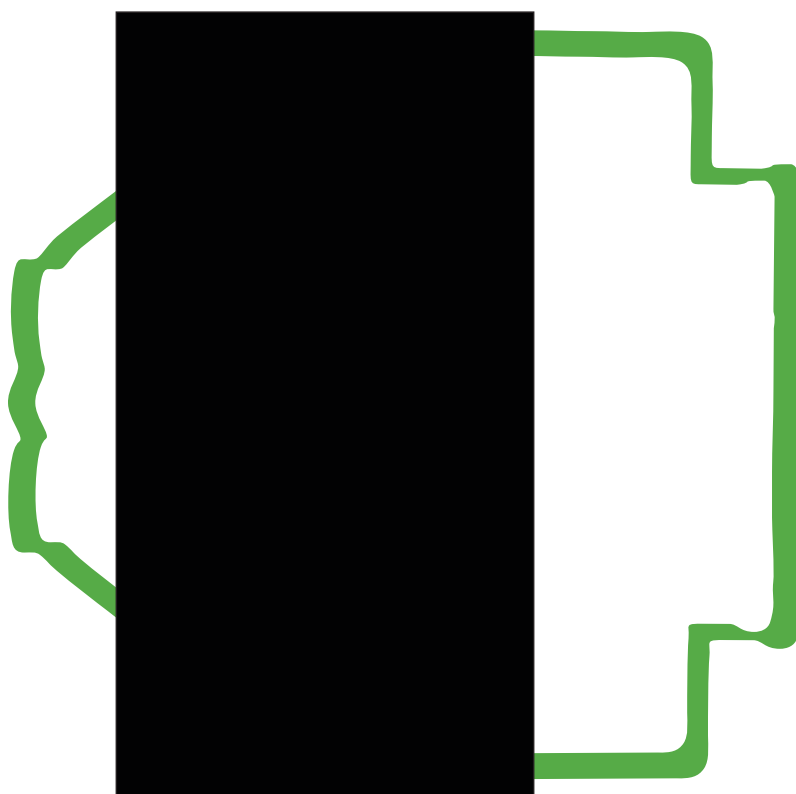






START S

Zona za kalibraciju



1. Postavite robot tako da je sa svih 5 senzora na crnoj površini.
2. Držite pritisnutu tipku za kalibraciju koja se nalazi s prednje lijeve strane robota oko 1 sekunde.
3. Kada dvije gornje svjetleće diode zatrepere nekoliko puta, kalibracija je gotova.